

Dress Code Policy

Wearing of the Uniform

Our school and our students are well respected within the local and wider community. This respect is largely based on the behaviour and dress of the students both in school and when they are seen outside of the school. Our school uniform is essential for the school maintaining this community respect and students are expected to wear the uniform with pride.

Under the Education Act, the Parents and Citizens' Association decided this school was to be a uniform school and recently reaffirmed that decision. It is expected that all parents will ensure that their children wear the correct school uniform every day at school and coming to and from school.

Students travelling on excursions, unless otherwise advised, must wear school formal uniform. Students attending evening functions at the school or travelling with the school must be smartly and discreetly dressed if school uniform is not required for the occasion. Students infringing the Dress Code Policy will be required to accept the consequences of breaching the policy.

Purchasing the Uniform

All items, except footwear, may be purchased at the school Uniform Shop.

Day Uniform

Boys and girls (Years 7–12)

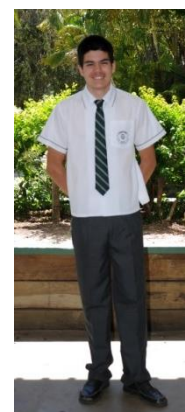
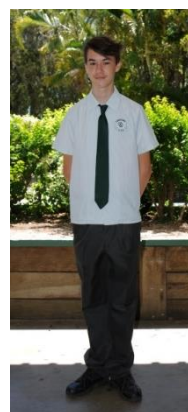
- Bottle green cotton backed polyester unisex shorts with grey triangle on left leg with CSHS embroidery
- Bottle green cotton backed polo shirt with grey outside panel separated by white piping. Grey collar. CSHS emblem on LHS (Years 7-9)
- Bottle green cotton-backed polo shirt with grey curved panel with smaller white curved insert panel separated by white piping. Grey collar with 'Senior' inserted. CSHS emblem on LHS (Years 10-12)
- Plain white socks (above ankle)
- All-purpose black lace-up shoe, with leather/vinyl upper (No canvas/fabric shoes permitted. No colours or patterns.)

Formal Uniform

Students will be required to wear their formal uniform each Tuesday in Term 2 and Term 3. The formal uniform must be worn in its entirety to and from school as described below. The formal uniform may be worn in its entirety on non-formal uniform days.

Junior Boys (Years 7-9)

- Tailored college grey melange trousers
- Tailored green pinstripe on white short-sleeve shirt with school emblem on LHS chest
- Plain bottle green tie
- Plain white socks (above ankle)
- Black lace-up leather/vinyl school shoes



Senior Boys (Years 10-12)

- Tailored college grey melange trousers

- Tailored white short-sleeve shirt with bottle green piping on collar and sleeve. School emblem on LHS chest
- Green CSHS tie with diagonal white/grey stripes
- Plain white socks (above ankle)
- Black lace-up leather/vinyl school shoes

Junior Girls (Years 7-9)

- Dark grey 3 knife pleat mid-calf length skirt
- Tailored green pinstripe on white short-sleeve blouse with school emblem on LHS chest
- Plain bottle green, cross-over tie
- Tailored college grey slacks
- Plain white socks (above ankle), flesh or grey coloured stockings
- Black lace-up leather/vinyl school shoes



Senior Girls (Years 10-12)

- Dark grey 3 knife pleat mid-calf length skirt
- Tailored white short-sleeve blouse with bottle green piping on collar and sleeve with school emblem on LHS chest
- Green CSHS tie with diagonal white/grey stripes. Length – 3rd button on blouse
- Tailored college grey slacks
- Plain white socks (above ankle), flesh or grey coloured stockings
- Black lace-up leather/vinyl school shoes

Winter Apparel

During the cooler months, students may be required to wear a jumper and/or track pants.

They can choose from:

- School tracksuit jacket with school logo and CSHS printed across the back
- Track pants with CSHS printed down the leg
- A bottle green pullover with school logo
- Senior Jersey—design nominated by year level and only worn by Year 12 students

Students may also choose to wear a bottle green tasselled acrylic scarf with “CABOOLTURE SHS” embroidered along one end which is available to purchase from the uniform shop.

Students not wearing a school-approved jumper or scarf will be asked to remove them.

Hat

It is highly recommended, because of our climate, that hats are worn by all students for outdoor activities. The uniform shop has the following options for students to choose from:

- Bottle green reversible bucket hat with CSHS emblem. Underside of hat will represent student’s house colour (either red, green, yellow or blue)
- Bottle green, grey and white school peak cap with CSHS emblem

Shoes

Uniform shoes must be worn at all times. These are an all-purpose black lace-up shoe, with leather/vinyl upper.

No canvas/fabric/cloth shoes are permitted. No colours or patterns are permitted. Slip on styles are also not permitted. Open-toed shoes (thongs, sandals), canvas/fabric or slip on shoes are not acceptable at any time.



If students attend school in unsafe footwear, arrangements will be made for them to either:

- return home to obtain the correct shoes or
- for correct shoes to be brought from home by parents or carers or
- swap into school provided shoes.

If this is not possible, students may be restricted to the office or other areas of the school, rather than attend practical subjects that require the appropriate shoes. They may also be restricted from the playground.

Jewellery

For reasons relating to health, safety, security and appearance, students are permitted to wear a watch and no more than two pairs of sleeper earrings or studs. No other jewellery is permitted.

During practical sessions (e.g. Sport, Science, Lifestyle Technology, Art, Industrial Technology) a teacher may request the removal of any piece of jewellery if it is deemed to constitute a safety hazard, or ask that hair be tied back. If a student refuses, the problem will be referred to a Year Level Coordinator.

Inappropriate jewellery may be confiscated and held at the school office for collection by a parent/guardian.

Facial Jewellery

Facial jewellery is not allowed at any time. Students with new piercings must apply for a pass to allow the piercing to be covered during the healing period. The pass can be obtained from the relevant Year Level Coordinator. Following the healing process, the piercing must not be worn.

Makeup and Hair

Students are not allowed to wear heavy makeup or eyeliner to school. The judgement of heavy makeup is to be determined by the Year Level Coordinator. Students will be asked to remove heavy makeup and eyeliner with makeup remover provided at the health room.

Student hairstyles and colour must be of industry standard. Hair colours need to be of a natural nature. For example, pink, purple, blue, green hair colours are unacceptable.

Safety Requirements in Dress

All students must wear footwear that meets required safety standards. Shoes must provide adequate protection. This means they must be leather or vinyl shoes with a solid top and be in good repair. Shoes having woven uppers (canvas, fabric, nylon) are inadequate.

Students involved in Industrial Technology classes will be issued a pair of safety glasses from the SERS scheme, which will be worn at all times during workshop classes. Loss or damage to these safety glasses will require the student to replace them. Students who do not meet these conditions will not be permitted to enter workshops.

Students taking Health and Physical Education and Agricultural subjects that require considerable outdoor work must have a hat and wear it during outdoor classes in these subjects. Hats must be of an appropriate design – broad brimmed hats are preferred.

The school Dress Code Policy is available on the school website and the parent handbook.

Uniform Slips

Parents are requested to write a note of explanation if students are unable to wear the full, correct uniform. Such students will be provided with clothing for the day from the Uniform Shop. If appropriate uniform clothing is not available from the Uniform Shop, then the student concerned will be referred to the year level deputy. Exemption slips will not be issued for non-approved jumpers - students will be required to remove them.